



Tradition in Leadership

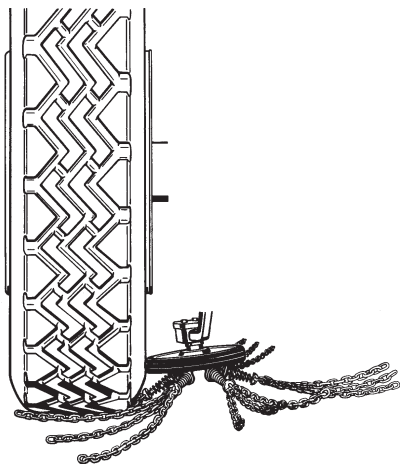
RUD-Chain, Inc.
P.O. Box 367
Hiawatha, IA 52233
Phone: 800-553-7993
Fax: 877-512-7209
www.rudchain.com
rotogrip@rudchain.com

Special Fitting Instructions

To be installed by authorized personnel only

ROTOGRIP[®] III

Automatic Chain System for Light Trucks



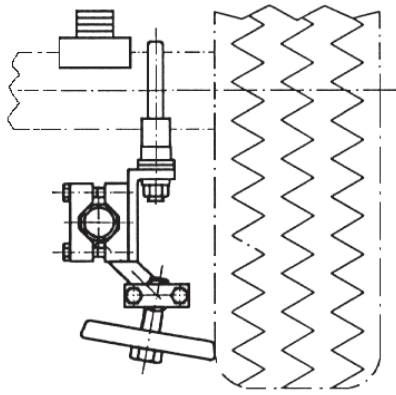
For Part #

66215S/D

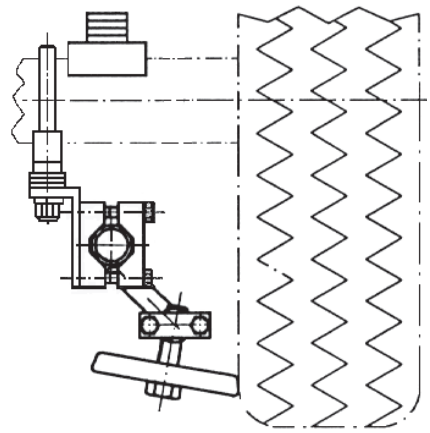
66222

Ford E350 & E450 Super Duty & Others

A₁



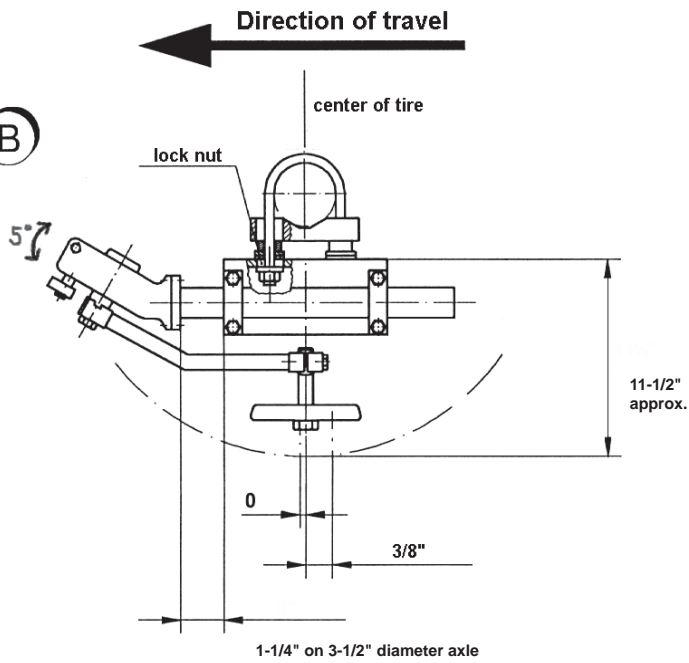
A₂



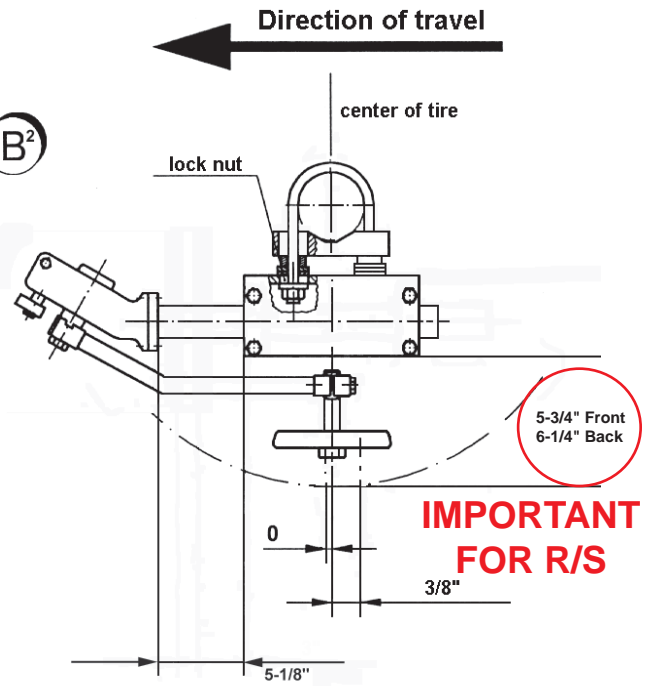
**E&F 250-350
w/o disc brakes**

**E450 SUPER DUTY
with disc brakes**

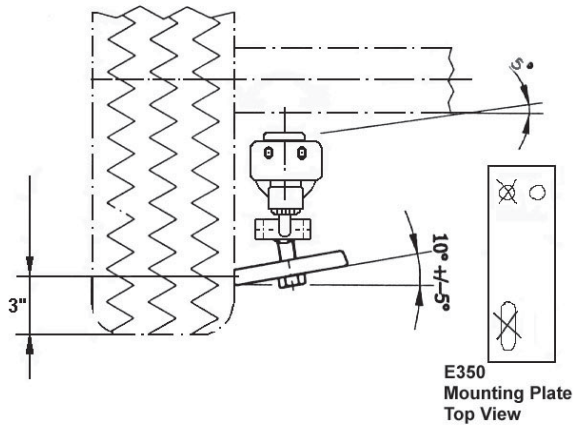
B



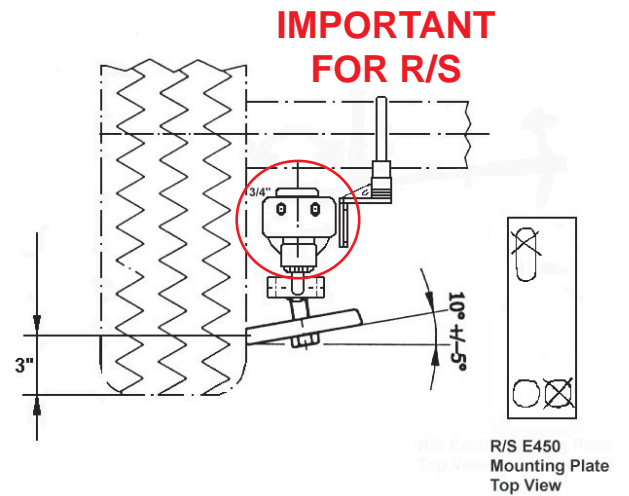
B²



C¹



C²



Mounting Instructions

The enclosed u-bolts as shown on page 2 (A&B) fit over the axle. Fit the clamping block on u-bolt on the underside of axle. Use distance pieces as needed to obtain correct chain wheel height. Fit washers & nuts on underside of clamping block. Tighten just snug enough to axle so that parts can be adjusted to correct measurements. After correct measurement positions are obtained, tighten bolts to specified torque.

Be sure to follow manufacturer's recommendation when replacing or re-torquing u-bolts.

Measurements other than chain wheel position may vary from vehicle to vehicle. Please observe chain wheel position.

Fit swivel unit as shown on page 2 (A,B,C). Observe both direction of travel and general instructions on installation . Tighten to specific torque.

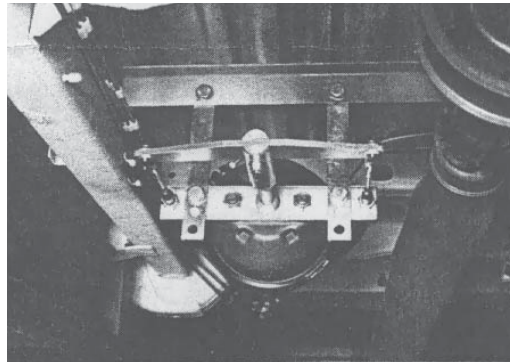
Mount cylinder unit as specified in general instructions.

Chain wheel is installed as specified in general instructions.

NOTE: It may be necessary to cut 2-3 links of chain on some applications.

R/S E450

It may be necessary to cut off approximately 1" of the excess thread on bottom of OEM sway bar link on R/S. Use special offset mount on R/S only!



Parts List

	<u>Part #</u>	<u>Part #</u>
Complete Automatic Chain System	66215	66222
1) Chain Wheel - complete	66010	66010
2) Pneumatic Unit - complete with cylinder unit only	66850 66852	66850 66852
3) Swing Arm Assembly - R/S complete L/S complete with swing arm right with swing arm left	8402002 8402003 66055 66065	8402004 8402005 66066 66067
4) Adapter - complete consists of:	66876	66823

Qty.	Description	66215S/D Part #	66222 Part #
1	90° Angle Plate - right	8401380	8401380
1	90° Angle Plate - left	66811	66811
8	Clamping Blocks	66802	66802
2	U-bolt	66819	66808
2	Axle Block	66817	66810
4	U-bolt Nuts	67892	67892
8	Bolts	66809	66809
12	Washer	67938	67938
4	Distance Washer	67229	67229

5) Cross piece with hardware	66831 67130	66831 67130
---------------------------------	-----------------------	-----------------------